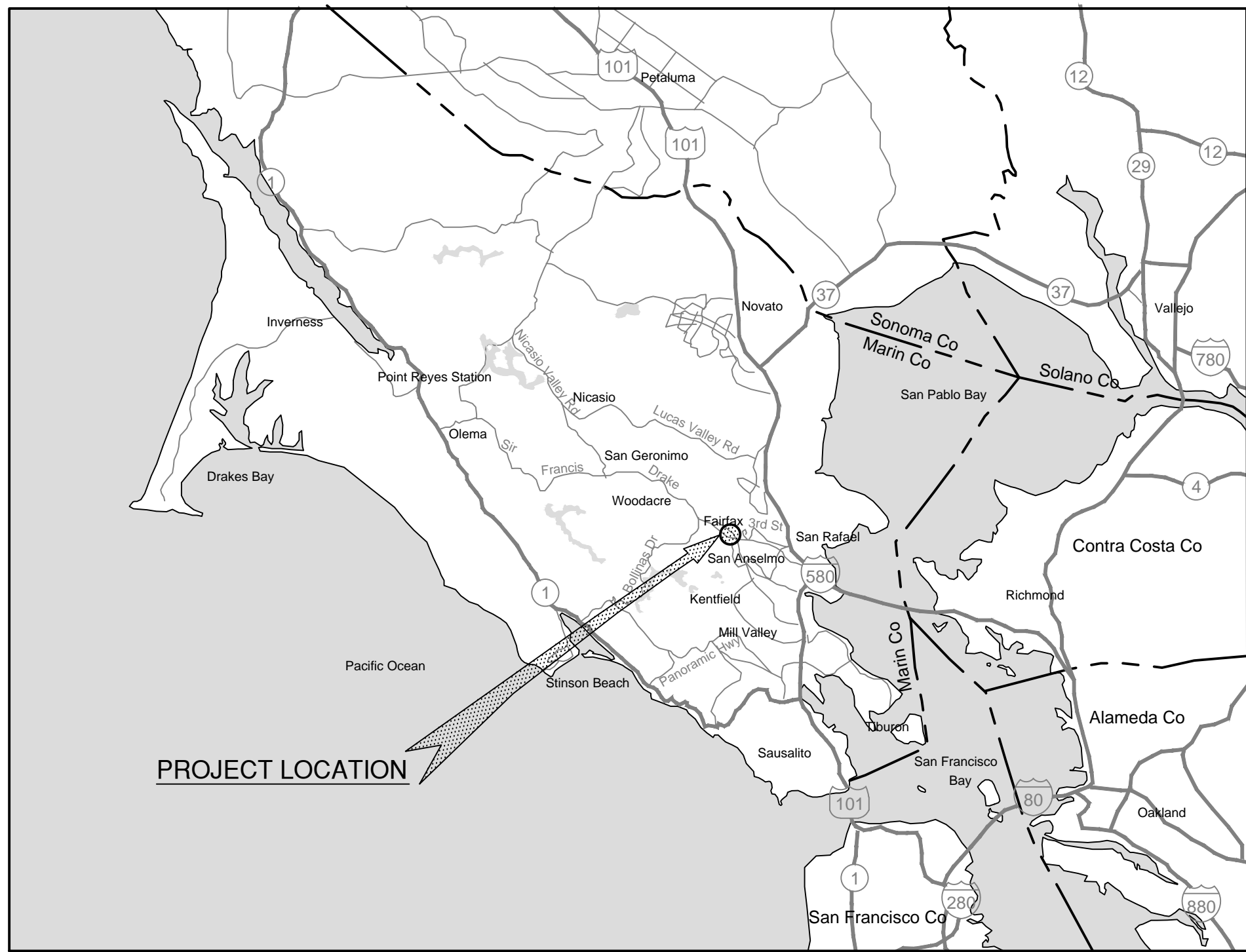
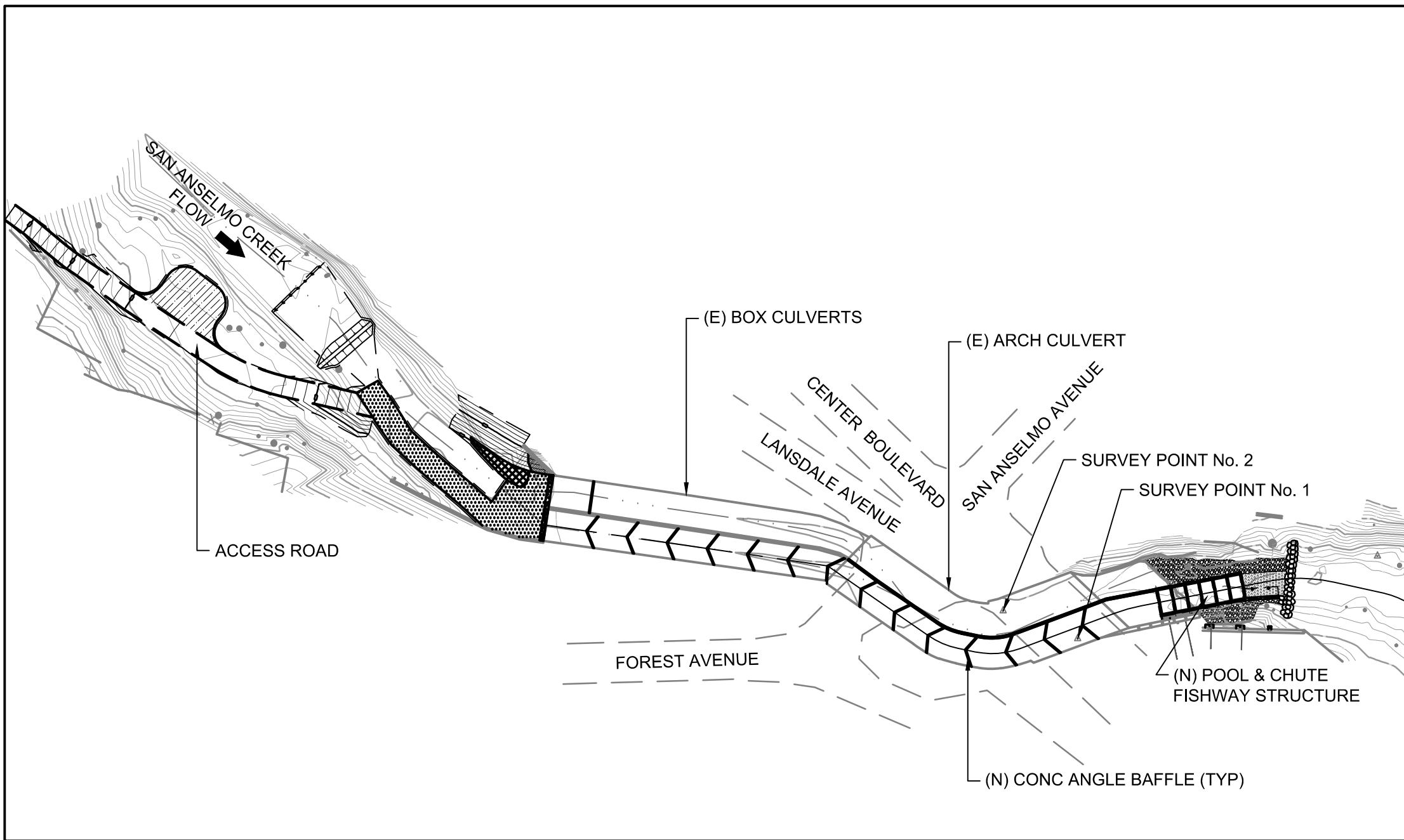


# LANSDALE FISH PASSAGE PROJECT

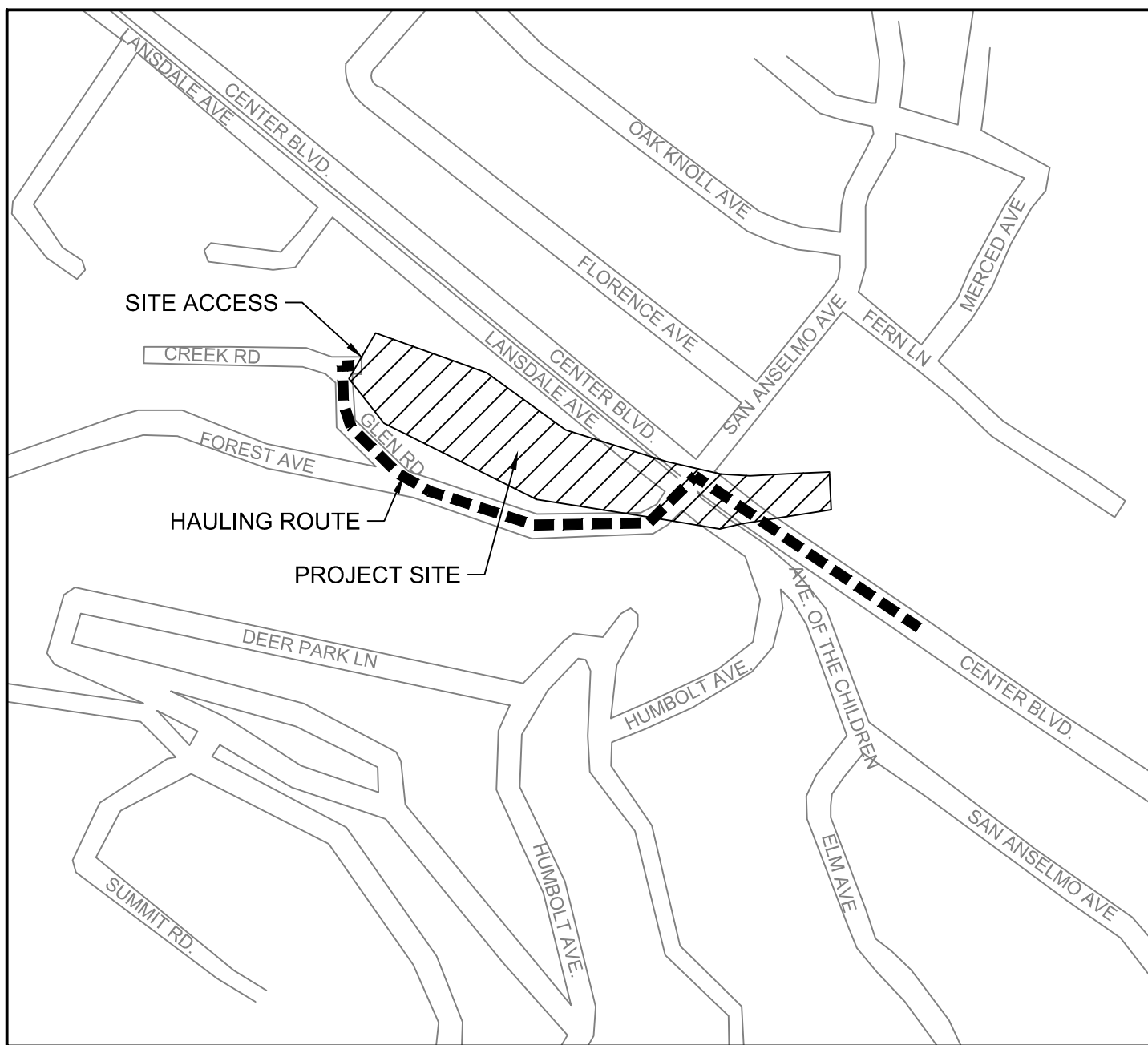
## SAN ANSELMO CREEK AT LANSDALE AVENUE SAN ANSELMO, CA PREPARED FOR THE TOWN OF SAN ANSELMO



**VICINITY MAP**  
Not to Scale



**GENERAL PROJECT SITE MAP**  
1" = 60'-0"

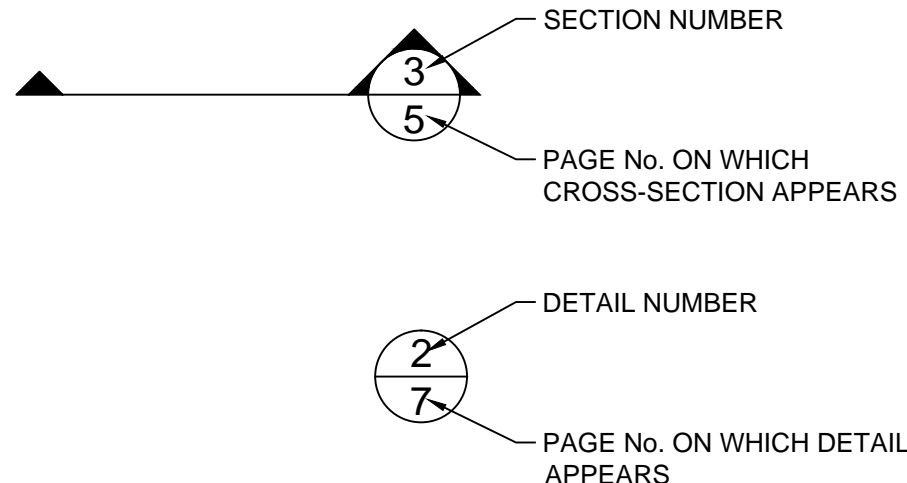


**LOCATION MAP**  
Not to Scale

### ABBREVIATIONS

APPROX	APPROXIMATELY
Ave	AVENUE
A.B.	AGGREGATE BASE
Blvd	BOULEVARD
CA	CALIFORNIA
CL	CENTERLINE
CL	CENTERLINE
Co	COUNTY
CONC	CONCRETE
Ct	COURT
<	DIAMETER
Dr	DRIVE
E	EASTING
(E)	EXISTING
EL	ELEVATION
ELEV	ELEVATION
ESM	ENGINEERED STREAMBED MATERIAL
FD	FOUND
'	FEET
FT	FEET
H	HORIZONTAL
Hwy	HIGHWAY
"	INCHES
IN	INCHES
Ln	LINE
MAX	MAXIMUM
MIN	MINIMUM
N	NORTHING
(N)	NEW
#	NUMBER
No.	NUMBER
O.C.	ON CENTER
PC	POINT OF CURVATURE
PRC	POINT OF REVERSE CURVE
PT	POINT OF TANGENCY
RC	RELATIVE COMPACTION
Rd	ROAD
RSP	ROCK SLOPE PROTECTION
St	STREET
STA	STATION
TYP	TYPICAL
V	VERTICAL
W/	WITH

### DRAWING SYMBOLS



### GENERAL NOTES

- ALL WORK SHOWN ON THESE PLANS SHALL BE ACCOMPLISHED IN ACCORDANCE WITH THE STANDARD SPECIFICATIONS OF THE COUNTY OF MARIN DATED JUNE, 1992, THE UNIFORM CONSTRUCTION STANDARDS OF THE CITIES OF SAN ANSELMO AND THE COUNTY OF MARIN DATED JUNE, 1979, CALTRANS STANDARD PLANS DATED MAY, 2006, AND THE CALTRANS STANDARD SPECIFICATIONS DATED MAY, 2006, (IN SO FAR AS THE SAME MAY APPLY) AS MODIFIED BY THE SPECIAL PROVISIONS FOR THIS PROJECT.
- THE LOCATION FOR UTILITIES SHOWN ON THESE PLANS IS APPROXIMATE ONLY. IT SHALL BE THE RESPONSIBILITY OF THE CONTRACTOR TO VERIFY LOCATION AND DEPTH. THIS VERIFICATION SHALL BE COORDINATED BY THE CONTRACTOR WITH THE APPROPRIATE UTILITY COMPANY. CALL U.S.A. (UNDERGROUND SERVICE ALERT) FOR UTILITY LOCATION QUESTIONS AT LEAST 48 HOURS BEFORE DIGGING. PHONE (800) 642-2444.
- WHERE PARKING IS PERMITTED, THE CONTRACTOR SHALL POST "NO PARKING" SIGNS WITHIN THE AREA OF WORK. THE POSTING SHALL BE VERIFIED BY THE ENGINEER AND THE POLICE DEPARTMENT 72 HOURS PRIOR TO COMMENCING WORK. HOWEVER, IF THE INTENDED WORK DOES NOT COMMENCE WITHIN 24 HOURS OF THE SCHEDULED WORK, ALL "NO PARKING" SIGNS SHALL BE REMOVED.
- CONTRACTOR TO PROVIDE A 72 HOUR NOTICE TO PROPERTY OWNERS AND RESIDENTS PRIOR TO COMMENCING CONSTRUCTION WORK. NOTIFICATION TO BE BY LETTER AND SHALL BE APPROVED BY OWNER. THE OWNER SHALL PROVIDE THE LIST OF THE RESIDENCES TO BE SENT THE LETTER.
- CONTRACTOR SHALL COMPLY WITH ANY CONDITIONS AS STATED IN RIGHT OF WAY AGREEMENTS, OR PERMISSION TO ENTER PRIVATE PROPERTY.
- THE CONTRACTOR SHALL PROVIDE ACCESS TO ADJACENT RESIDENTS AT ALL TIMES.
- THE CONTRACTOR SHALL PROVIDE DEWATERING PLAN CONFORMING TO THE SPECIFICATIONS.
- CONTRACTOR TO COMPLY WITH ALL CONDITIONS OF ENVIRONMENTAL PERMITS AS PROVIDED BY THE COUNTY.

### SURVEY NOTES

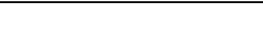

- SITE TOPOGRAPHY SURVEY CONDUCTED BY WINZLER AND KELLY ON MAY 9, 2007. HORIZONTAL AND VERTICAL DATUM ASSUMED (HORIZ IS MAGNETIC).
- EXISTING SEWER PIPELINE LOCATION AND DOWNSTREAM SITE TOPOGRAPHY SURVEY CONDUCTED BY STETSON ENGINEERS, INC. ON JULY 13, 2012.
- THE BASES OF ELEVATIONS AND HORIZONTAL ALIGNMENT FOR THIS DESIGN ARE REFERENCED FROM POINTS 1 & 2:

POINT	NORTHING	EASTING	ELEVATION	DESCRIPTION
1	4937.512	4908.238	489.47	FD NAIL ON TRUNK
2	4951.166	4871.482	489.48	SET NAIL ON CONCRETE

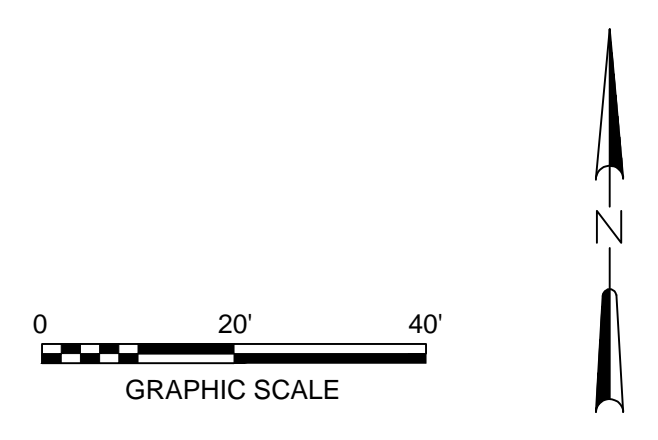
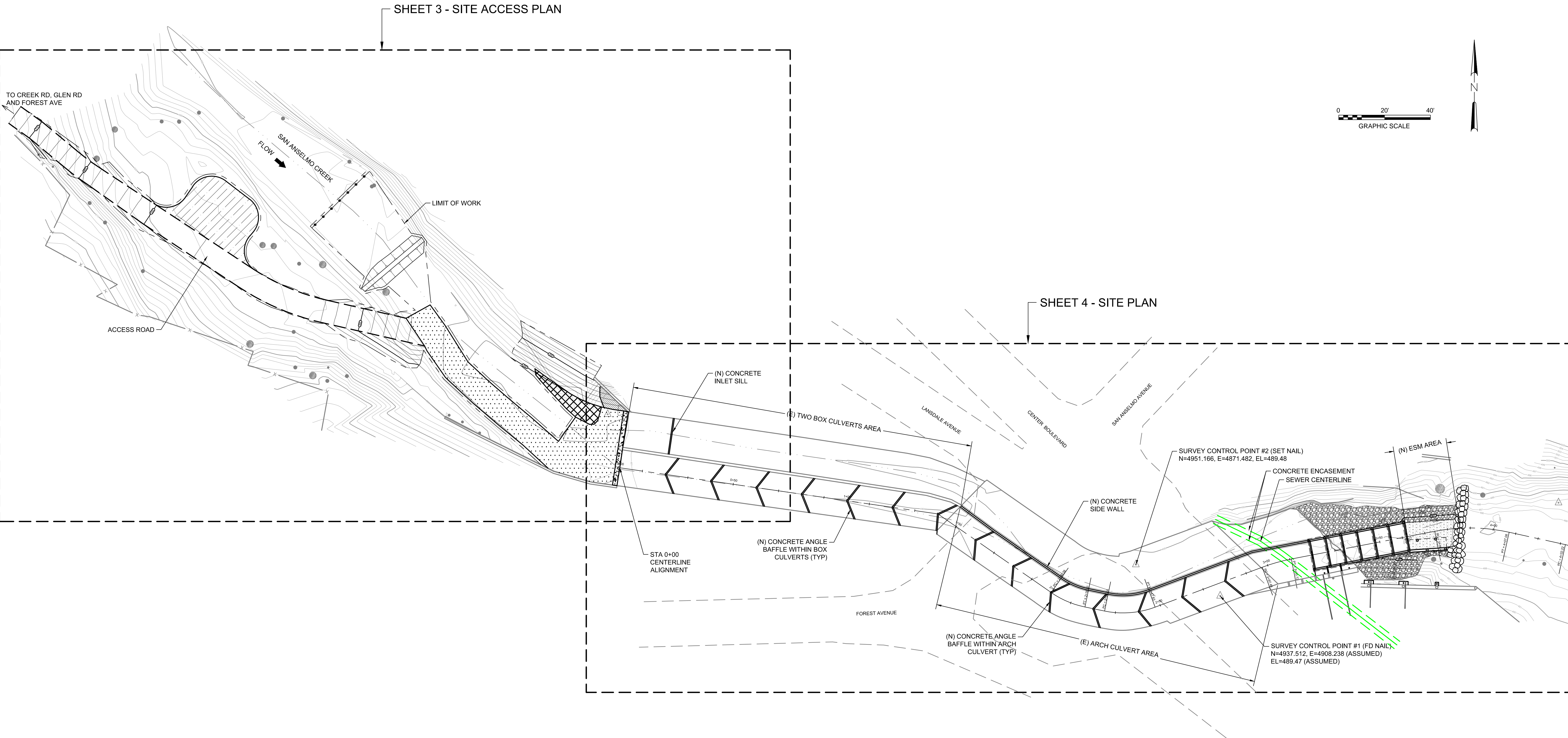
### SHEET INDEX

SHEET No.	DESCRIPTION
1	TITLE SHEET
2	PROJECT OVERVIEW
3	SITE ACCESS PLAN
4	SITE PLAN AND PROFILE FISHWAY CENTERLINE
5	CROSS-SECTIONS
6	POOL & CHUTE FISHWAY STRUCTURE PLAN VIEW, PROFILE AND TYPICAL CROSS-SECTIONS
7	TYPICALS AND DETAILS

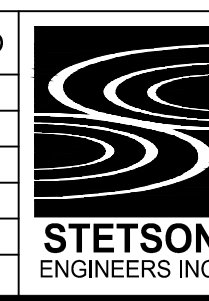
### 100% SUBMITTAL

DESIGNED:	G.T. M.L.	No.	DATE	REVISION	BY	APPROVED	 <b>STETSON</b> ENGINEERS INC.	Stetson Engineers Inc. 2171 E. Francisco Blvd., Suite K San Rafael, CA, 94901 (415) 457-0701	 <b>Michael Love &amp; Associates</b> <i>Hydrologic Solutions</i> PO Box 4477 • Arcata, CA 95518 • (707) 476-8938	FISH PASSAGE PROJECT SAN ANSELMO CREEK AT LANSDALE AVE	TITLE SHEET	DATE:	JULY 19, 2012	SHEET 1 OF 7
DRAFTED:	G.T. D.H.					SCALE:						AS INDICATED		
CHECKED:	J.D.					PROJECT No.:						2393		

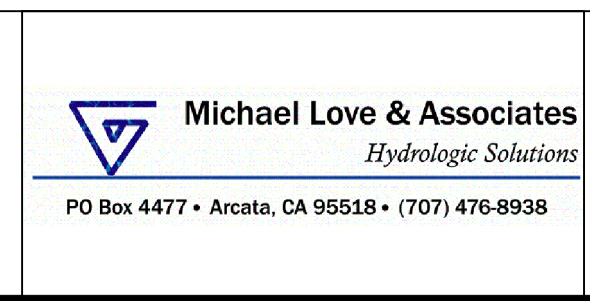




DESIGNED:	G.T. M.L.	No.	DATE	REVISION	BY	APPROVED
DRAFTED:	G.T. D.H.					
CHECKED:	J.D.					



Stetson Engineers Inc.  
2171 E. Francisco Blvd., Suite K  
San Rafael, CA, 94901  
(415) 457-0701



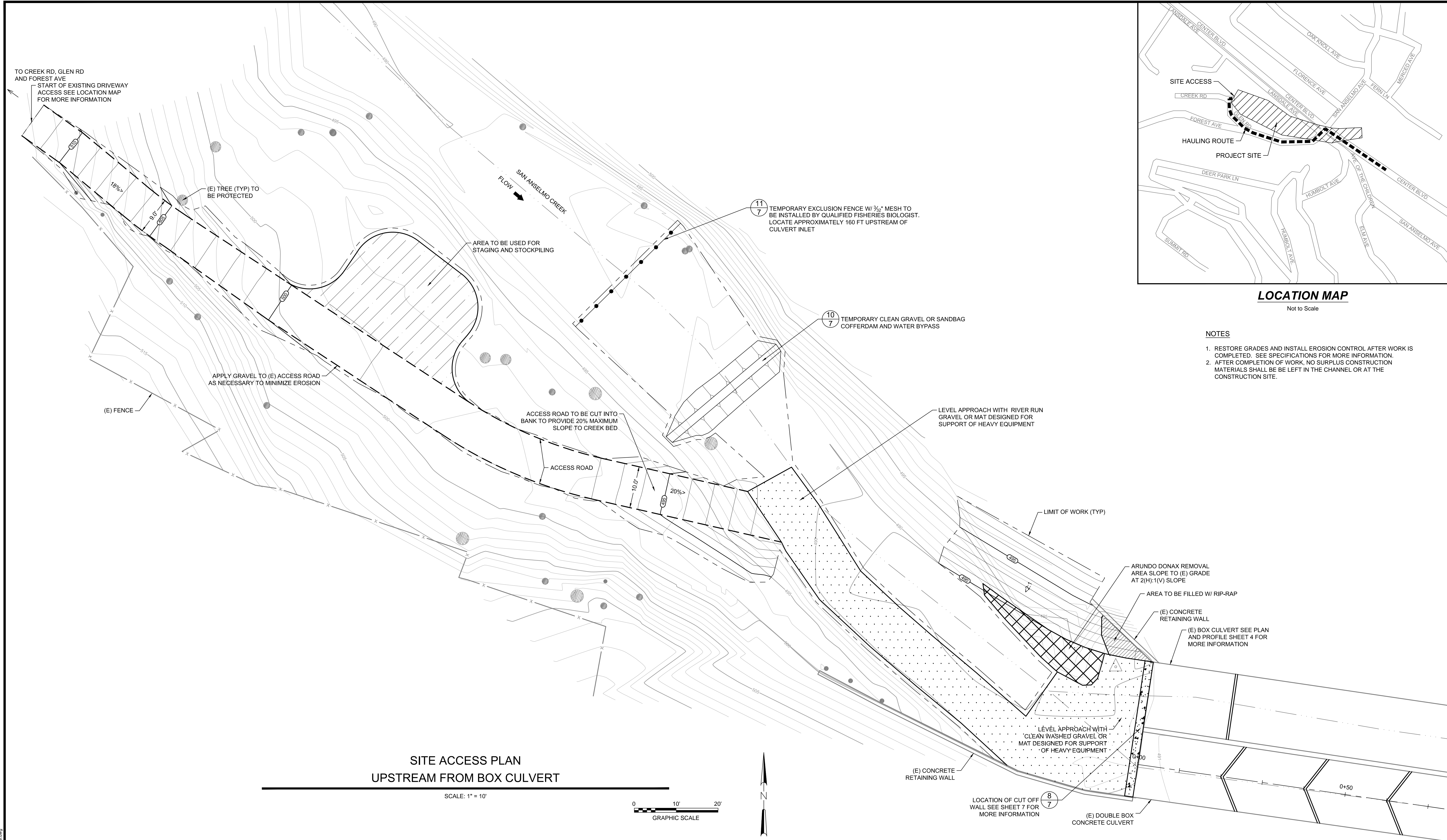
# FISH PASSAGE PROJECT SAN ANSELMO CREEK AT LANSDALE AVE

PROJECT OVERVIEW

DATE:	JULY 19, 2012
SCALE:	1" = 20'-0"
PROJECT No.:	2393

F:\DATA\2393\CADD\Drawings\Sheet\Project\SS\Sheet.dwg



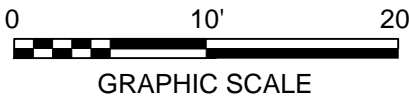


LOCATION MAP  
Not to Scale

- NOTES
1. RESTORE GRADES AND INSTALL EROSION CONTROL AFTER WORK IS COMPLETED. SEE SPECIFICATIONS FOR MORE INFORMATION.
  2. AFTER COMPLETION OF WORK, NO SURPLUS CONSTRUCTION MATERIALS SHALL BE LEFT IN THE CHANNEL OR AT THE CONSTRUCTION SITE.

SITE ACCESS PLAN  
UPSTREAM FROM BOX CULVERT

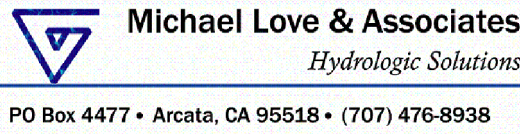
SCALE: 1" = 10'



DESIGNED:	G.T. M.L.	No.	DATE	REVISION	BY	APPROVED
DRAFTED:	G.T. D.H.					
CHECKED:	J.D.					



Stetson Engineers Inc.  
2171 E. Francisco Blvd., Suite K  
San Rafael, CA. 94901  
(415) 457-0701



FISH PASSAGE PROJECT  
SAN ANSELMO CREEK AT LANSDALE AVE

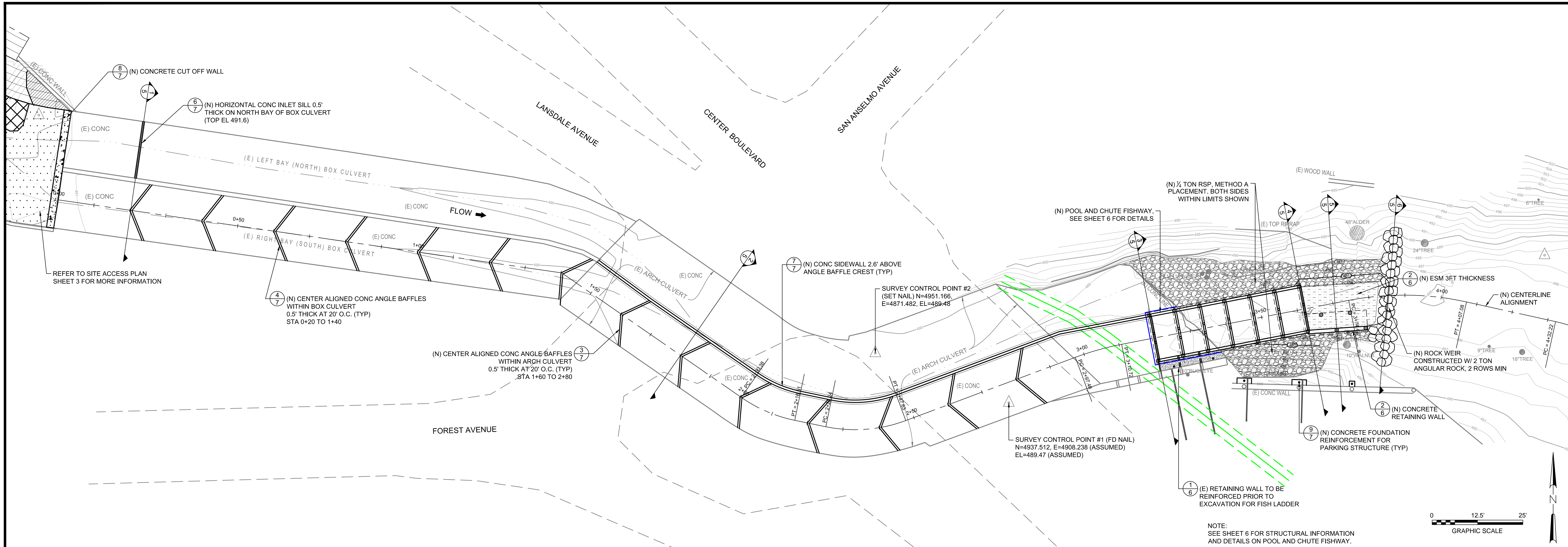
SITE ACCESS PLAN

DATE:	JULY 19, 2012
SCALE:	1" = 10'-0"
PROJECT No.:	2393

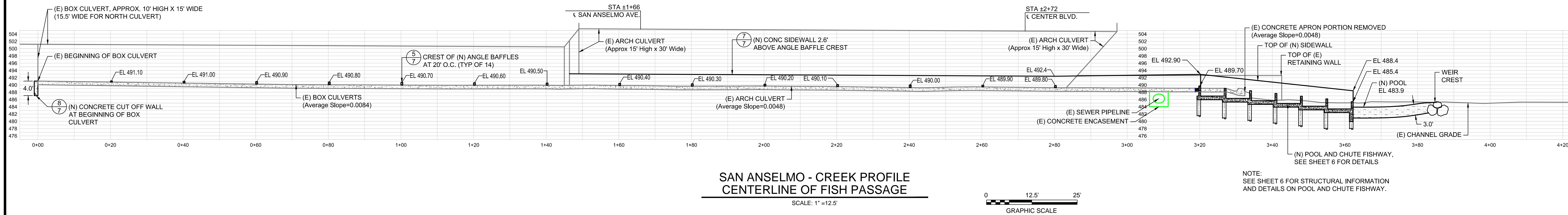
SHEET  
3 OF 7

F:\DATA\2393\CAD\Drawings\SiteAccessPlan.dwg







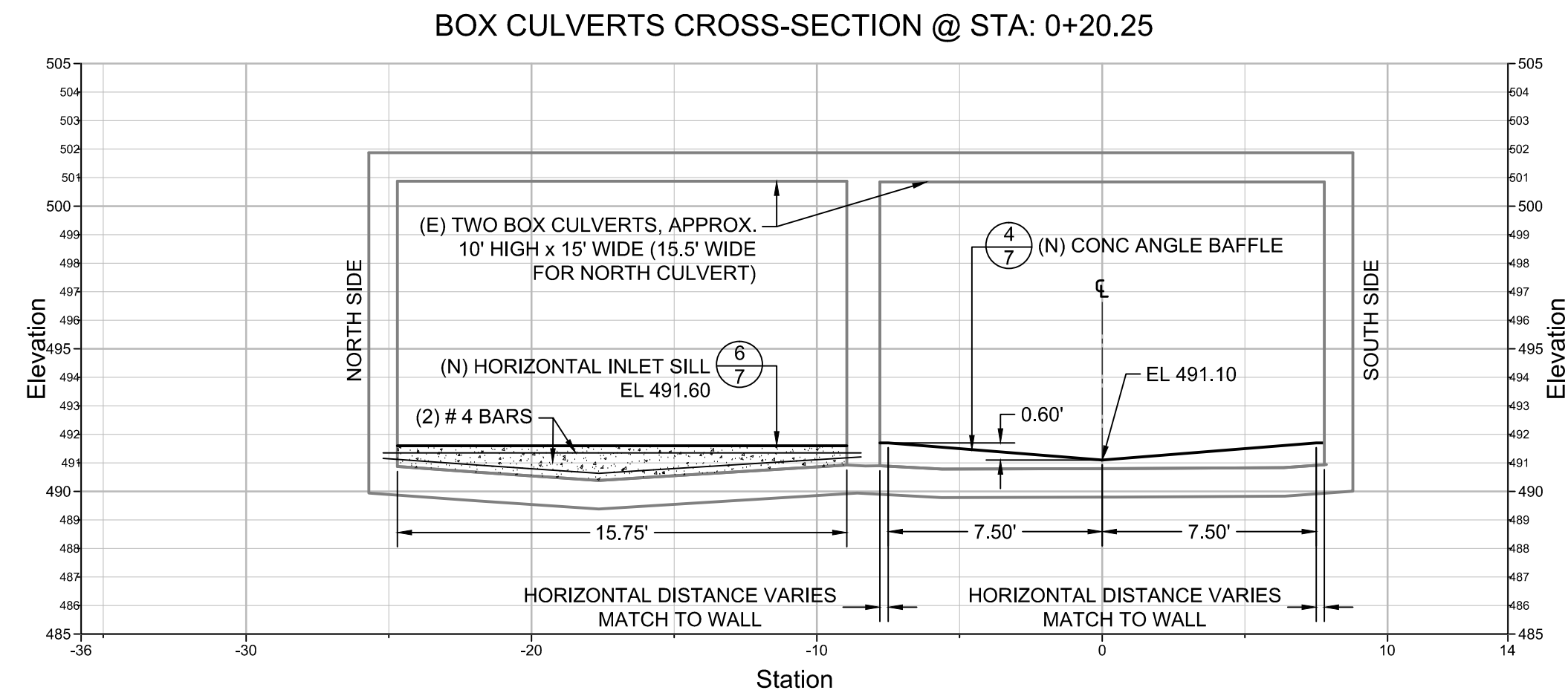
SAN ANSELMO - CREEK PLAN VIEW  
CENTERLINE OF FISH PASSAGE  
SCALE: 1"=12.5'



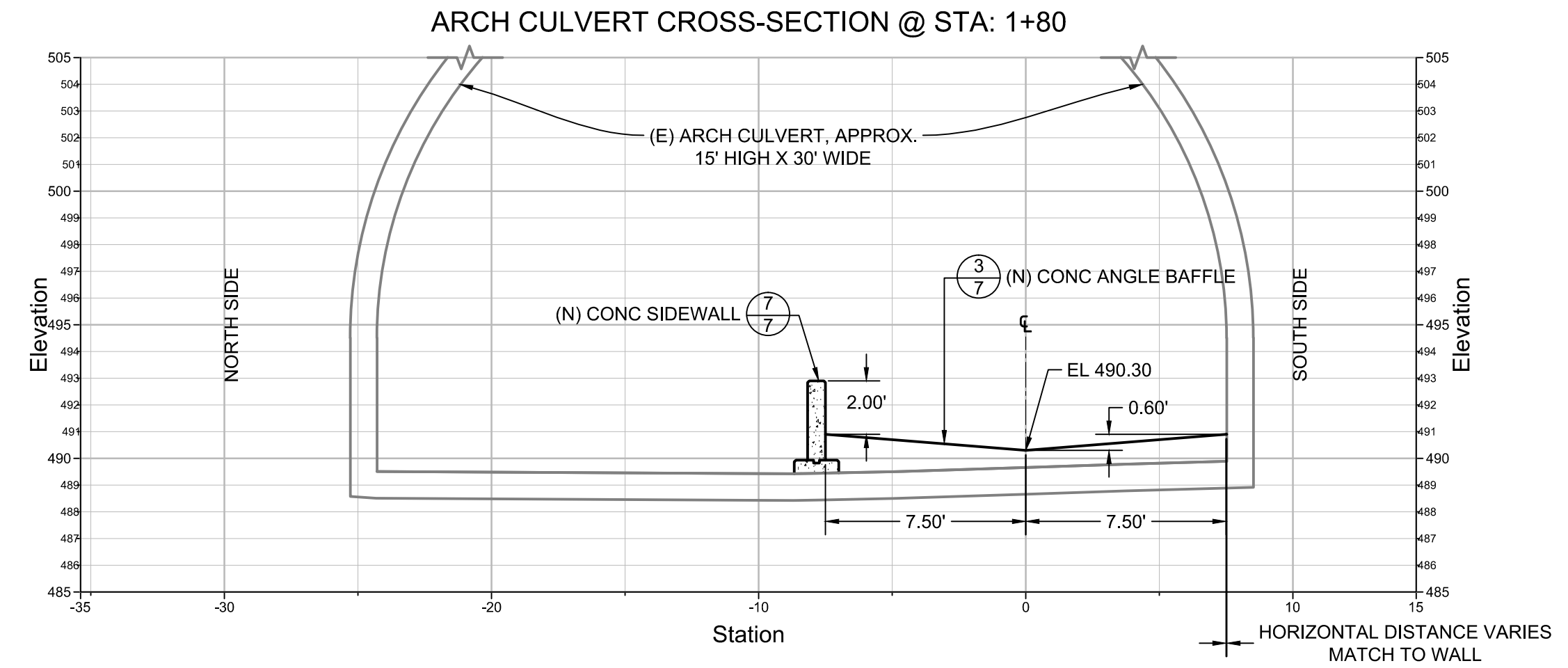
SAN ANSELMO - CREEK PROFILE  
CENTERLINE OF FISH PASSAGE  
SCALE: 1"=12.5'

DESIGNED:	G.T. M.L.	No.	DATE	REVISION	BY	APPROVED	 STETSON ENGINEERS INC.	Stetson Engineers Inc. 2171 E. Francisco Blvd., Suite K San Rafael, CA. 94901 (415) 457-0701	 Michael Love & Associates <i>Hydrologic Solutions</i> PO Box 4477 • Arcata, CA 95521 • (707) 476-8938	FISH PASSAGE PROJECT SAN ANSELMO CREEK AT LANSDALE AVE	SITE PLAN AND PROFILE FISHWAY CENTERLINE	DATE:	JULY 19, 2012	SHEET 4 OF 7
DRAFTED:	G.T. D.H.					SCALE:						1" = 12'-6"		
CHECKED:	J.D.					PROJECT No.:						2393		

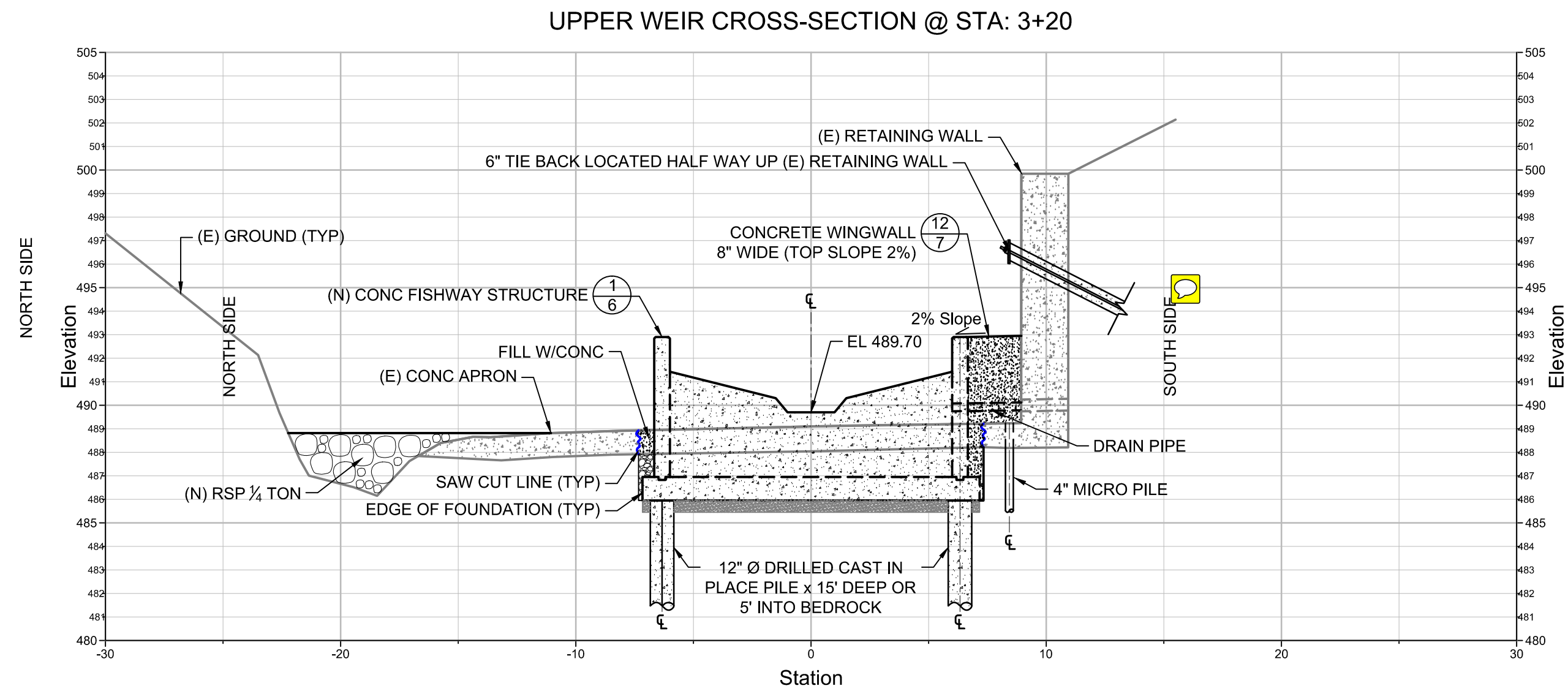




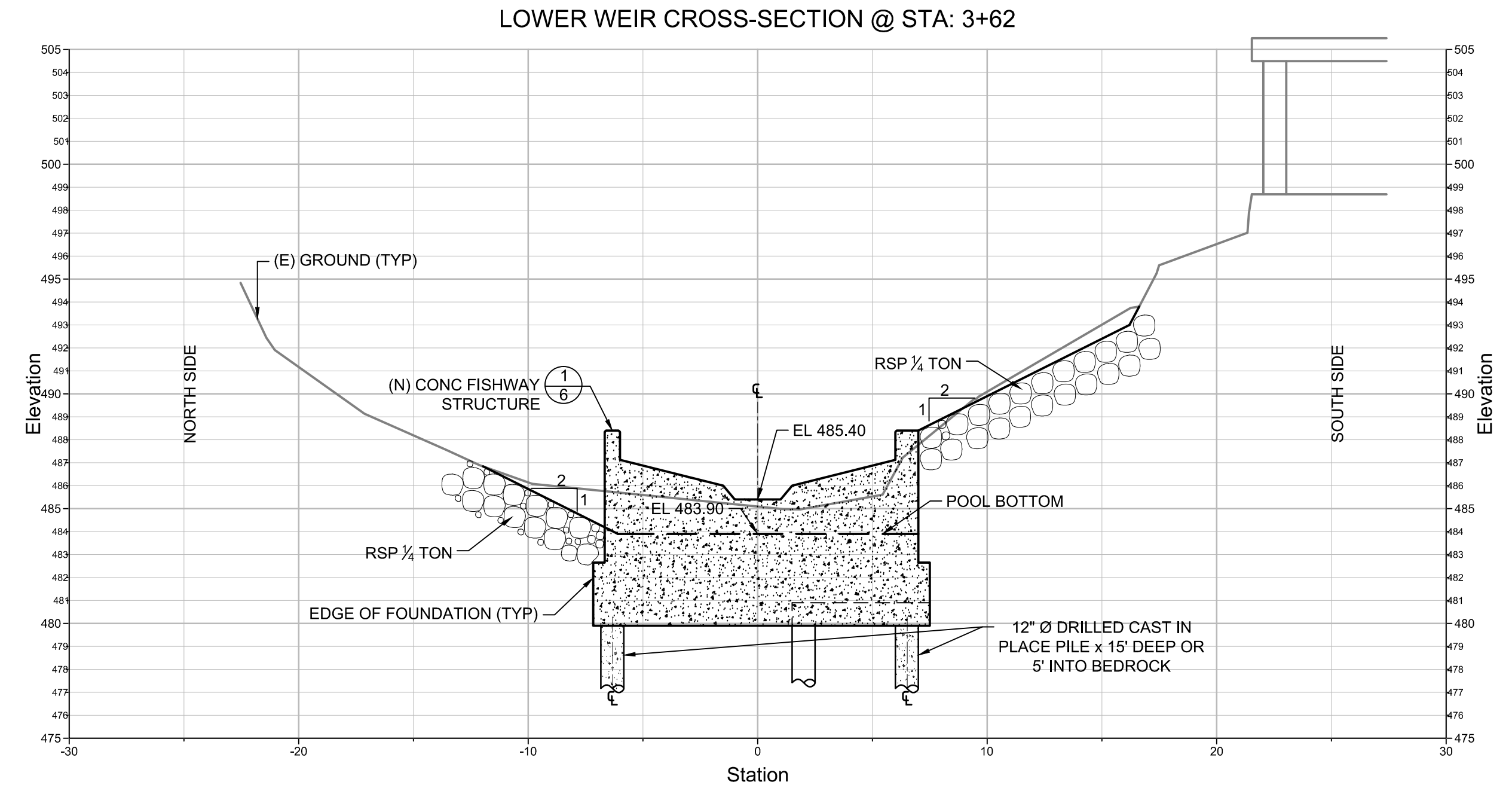
1  
5 CROSS-SECTION - INSIDE (E) TWO BOX CULVERTS  
Scale: 1" = 5'



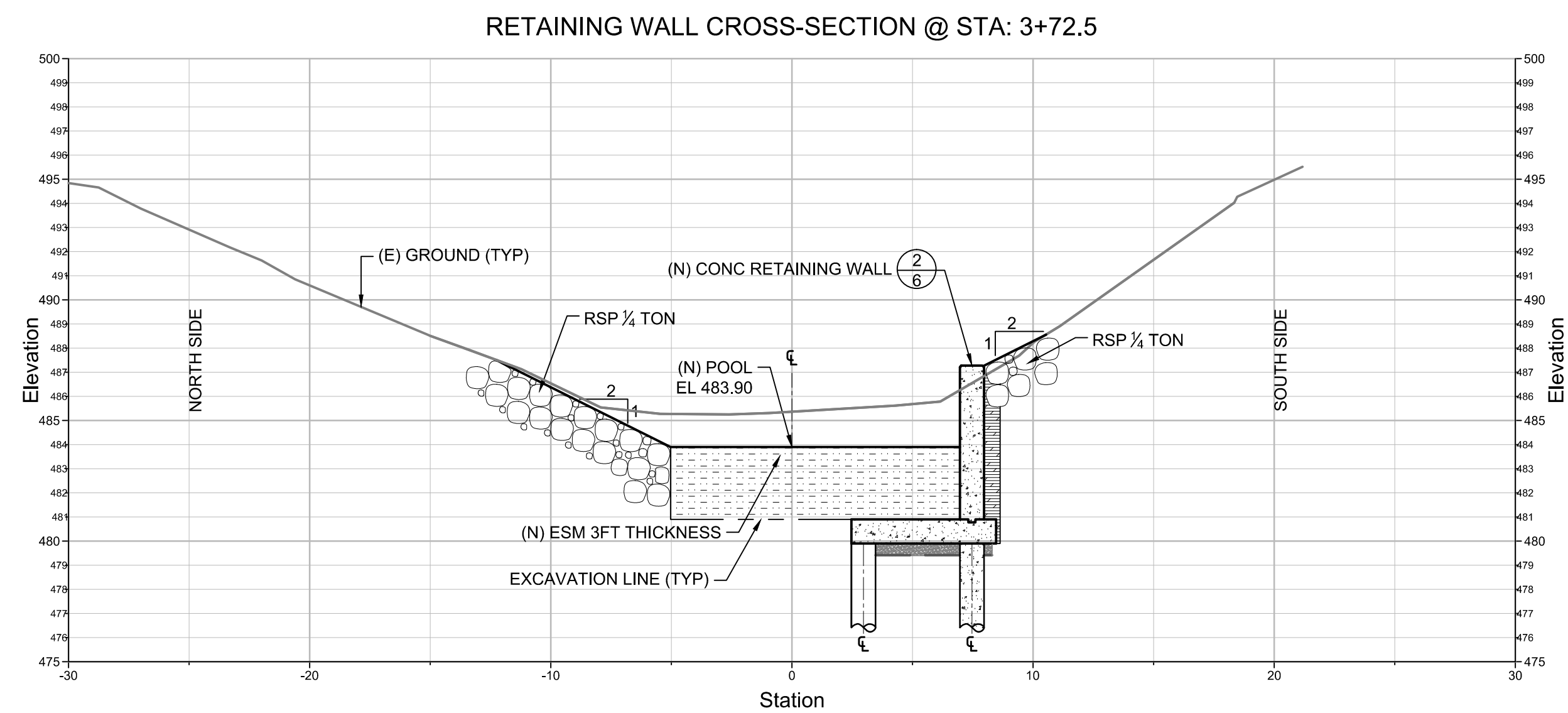
2  
5 CROSS-SECTION - INSIDE (E) ARCH CULVERT  
Scale: 1" = 5'



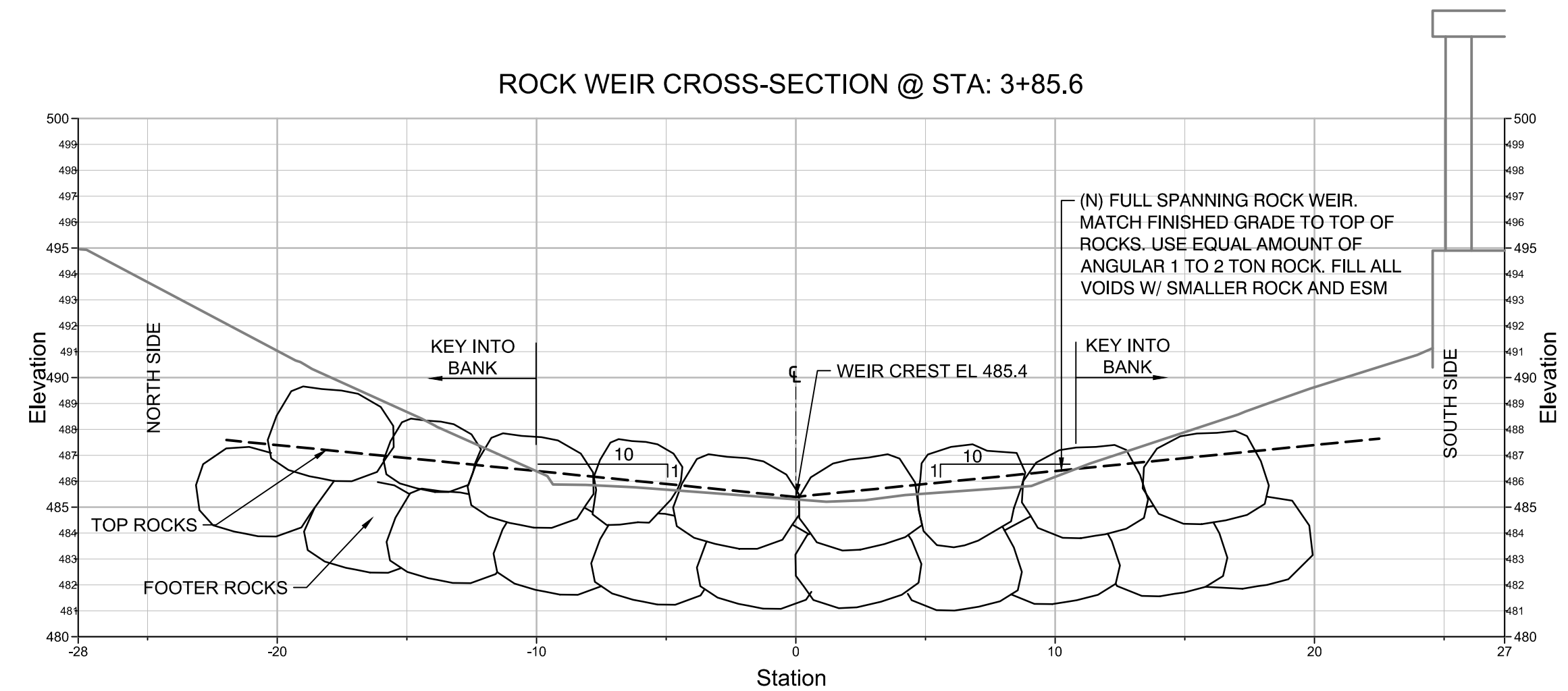
3  
5 CROSS-SECTION - AT FISHWAY UPPER WEIR  
Scale: 1" = 5'



4  
5 CROSS-SECTION - AT FISHWAY LOWER WEIR  
Scale: 1" = 5'

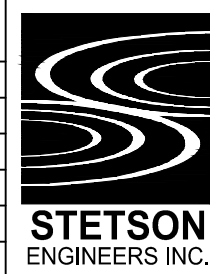


5  
5 CROSS-SECTION - AT CONCRETE RETAINING WALL  
Scale: 1" = 5'



6  
5 CROSS-SECTION - AT ROCK WEIR STRUCTURE  
Scale: 1" = 5'

DESIGNED:	G.T. M.L.	No.	DATE	REVISION	BY	APPROVED
DRAFTED:	G.T. D.H.					
CHECKED:	J.D.					



Stetson Engineers Inc.  
2171 E. Francisco Blvd., Suite K  
San Rafael, CA, 94901  
(415) 457-0701

Michael Love & Associates  
Hydrologic Solutions  
PO Box 4477 • Arcata, CA 95521 • (707) 476-8938

## FISH PASSAGE PROJECT SAN ANSELMO CREEK AT LANSDALE AVE

### CROSS-SECTIONS

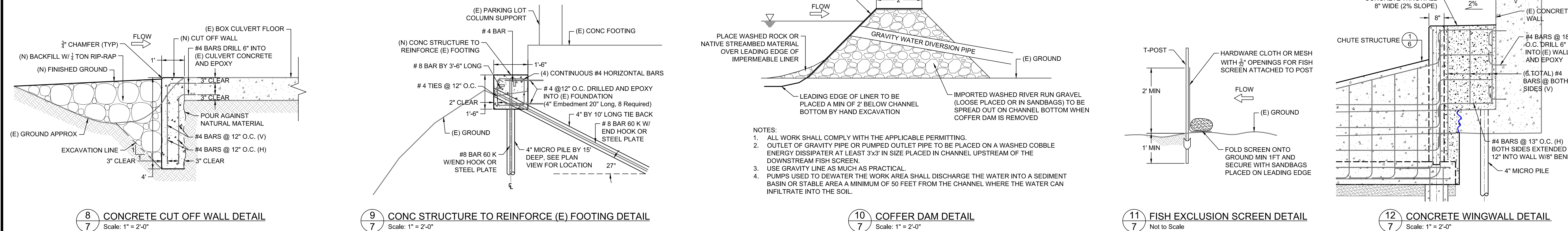
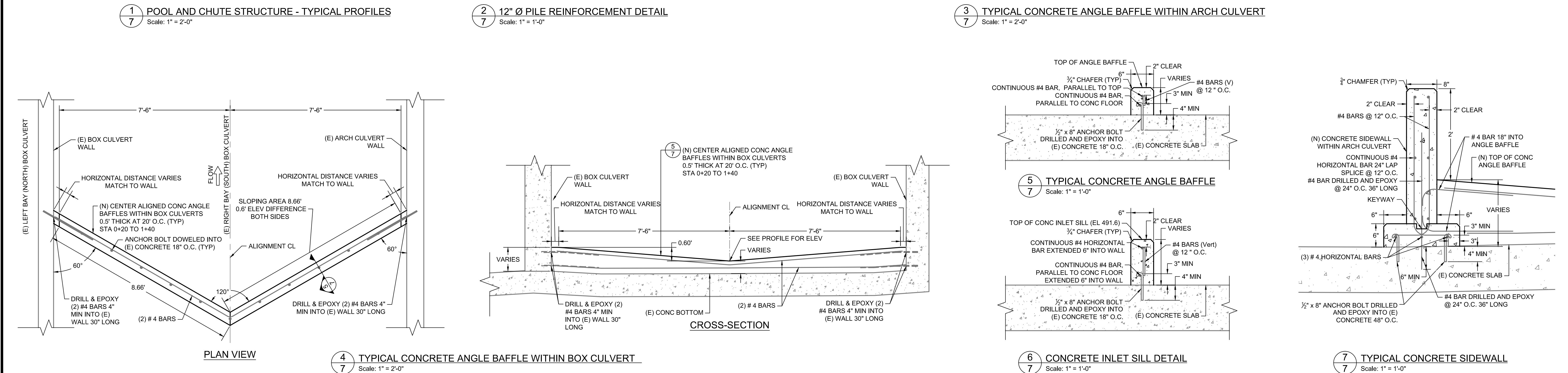
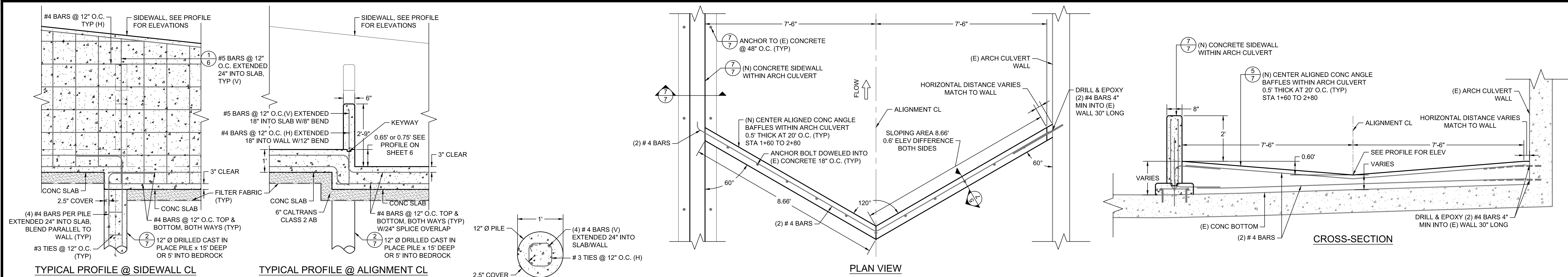
DATE:  
JULY 19, 2012  
SCALE:  
1" = 5'-0"  
PROJECT No.:  
2393

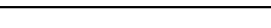

SHEET  
5 OF 7









DESIGNED:	G.T. M.L.	No.	DATE	REVISION	BY	APPROVED	 <b>STETSON</b> ENGINEERS INC.	Stetson Engineers Inc. 2171 E. Francisco Blvd., Suite K San Rafael, CA. 94901 (415) 457-0701	 <b>Michael Love &amp; Associates</b> <i>Hydrologic Solutions</i> PO Box 4477 • Arcata, CA 95518 • (707) 476-8938	FISH PASSAGE PROJECT  SAN ANSELMO CREEK AT LANSDALE AVE	TYPICALS AND DETAILS	DATE:	JULY 19, 2012	SHEET 7 OF 7
DRAFTED:	G.T. D.H.					SCALE:						AS INDICATED		
CHECKED:	J.D.					PROJECT No.:						2393		